



MTB SERIES

TRUCK BODY TRAILERS



One Tough Trailer

Durability Defined - The MTB Series of trailers are designed from the ground up to withstand the rigors and demands of daily use on the job. For starters, all models have 16" on-center sidewall members for superior strength and rigidity. The 3/4" thick Engineered Wood floor provides years of service, and never complains. See the Specifications section inside for more details and information.

Size and Selection - The MTB Series is available in either a steel frame or aluminum frame. Sizes range from a 7' x 8' single axle model all the way up to a 8.5' wide x 53' long 5th wheel (or gooseneck) model. Axles range from a single 3,000 lb. axle to triple 8,000 lb. axles. There are literally hundreds of combinations to choose from. If you're not sure, see your dealer for expert guidance and help.

Options for Everyone - Your options can be as simple as a ramp door, roof vent and D-rings for fastening down your cargo. You can also add built in lighting, electrical outlets, a generator, heating and/or air conditioning, cabinets, bathrooms, partition walls, extra height, flooring options, extra doors, windows, aluminum wheels and more.



MTB SERIES

TRUCK BODY TRAILERS

CUSTOMIZED JUST FOR YOU!



FULL SIZE VENDING TRAILER WITH GENERATOR AND AIR CONDITIONING



CAR HAULER



MERCHANDISING TRAILER



MAC THE KNIFE'S NEW JOB



BACK PORCH BBQ TRAILER



COLOSSAL CONCESSIONS!



MERCHANDISING AND PRESENTATION TRAILER



YUMMY YOGURT To Go TRAILER

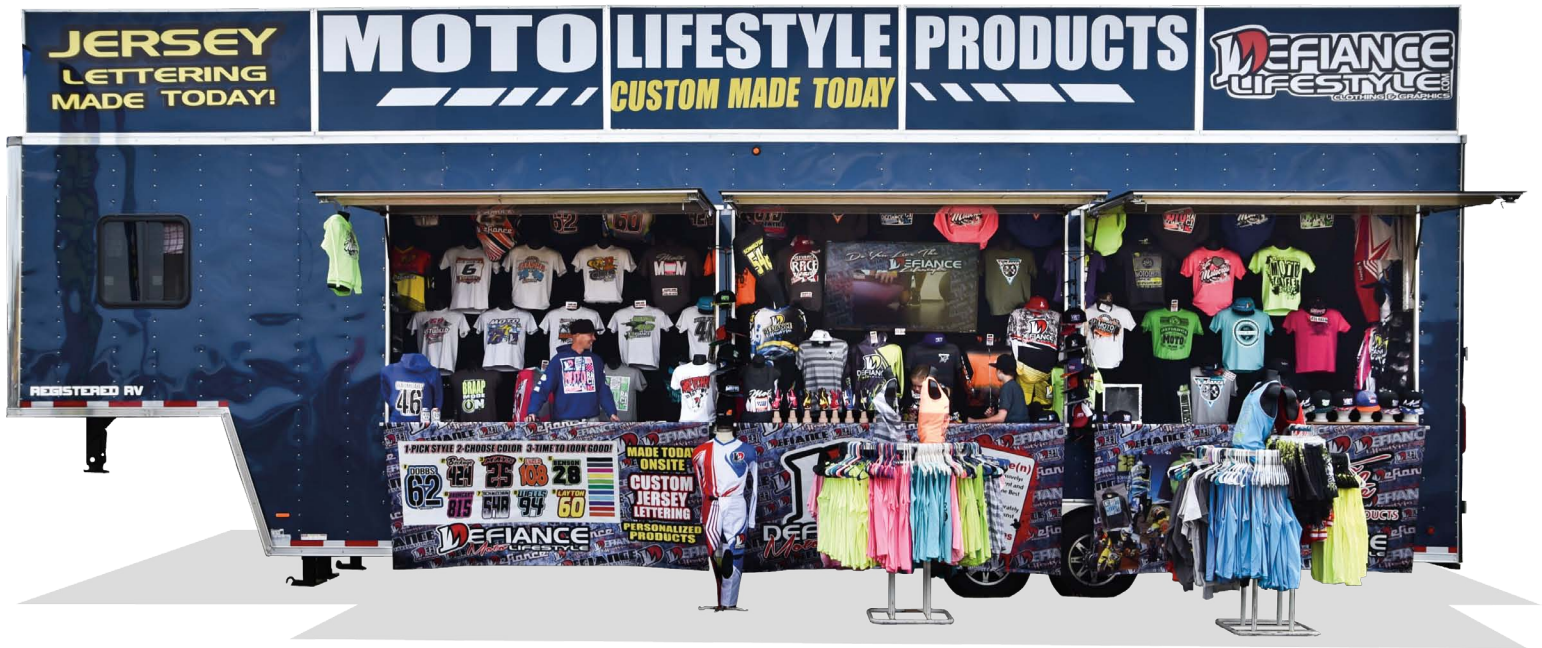


PORTABLE BBQ PIT To Go



**COFFEE HOUSE
FRESH BREW, DELIVERED To You!**

MADE TO MOVE PRODUCT!



THE ART OF POWERFUL PRESENTATION



EFFICIENT FULL SERVICE



QUICK TO SETUP



*START SMALL
WITH ALL OF THE BASICS*



ADD A WEDGE NOSE FOR MORE STORAGE!

HUNDREDS OF OPTIONS TO CHOOSE FROM!

CUSTOM CABINETS



Hand crafted cabinets per your layout!

THREE BAY STAINLESS STEEL SINK



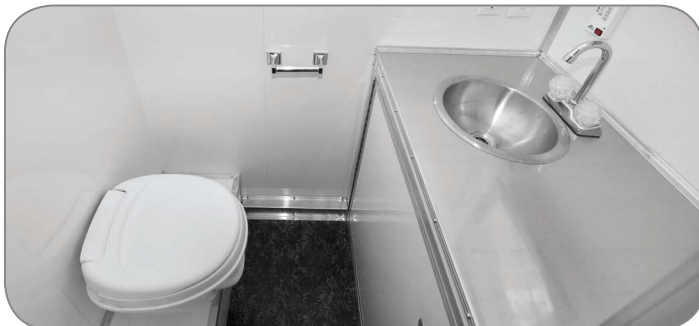
Certified for food preparation by the NSF (National Sanitation Foundation)

EXTERIOR TOOL AND EQUIPMENT STORAGE



Top shelf is accessible from the inside also!

BATHROOM PACKAGES



One of Several Available Designs

Other options include Walk On Roofs, Heating/Air Conditioning, Vinyl or Carpet Floor Coverings, Awnings, Shelving, Dinettes, Generators, Slat Walls for Display Merchandising and much, much more! Please see your dealer for more information.

HEAVY DUTY STABILIZER JACK



Stabilizer Jacks keep your trailer level and steady during loading, unloading and while you're working in your trailer.

HAND WASH SINK



Wall Mounted, Stainless Steel, NSF Certified

ROOF VENTS



Top of The Line 12-Volt "Fan-tastic" Vent



Also available in 12-volt, 110-volt, & unpowered configurations

WINDOWS



Window Sizes

30" Wide X 15" Tall, Horizontal Slider Window
15" Wide X 30" Tall, Vertical Slider Window
30" Wide X 30" Tall Egress Window
30" Wide X 30" Tall Slider Window

METAL COLOR OPTIONS

Standard Colors		Metallic Colors	Extra Cost Colors
Polar White		Champagne	
Dove Gray		Beige	
Victory Red		Light Pewter	
Brandywine		Silver Mist	
Cargo Green		Medium Charcoal	
Black		Indigo Blue	

Size and Axle Combinations									
STEEL FRAME, BUMPER PULL									
Axle ->	TA2	TA3	TA4	TA5	TA6	TR52	TR60	TR70	TR80
8.5' x 12'	•	•	•	•	•				
8.5' x 14'	•	•	•	•	•				
8.5' x 16'	•	•	•	•	•				
8.5' x 18'	•	•	•	•	•	•	•	•	•
8.5' x 20'	•	•	•	•	•	•	•	•	•
8.5' x 22'	•	•	•	•	•	•	•	•	•
8.5' x 24'	•	•	•	•	•	•	•	•	•
8.5' x 26'		•	•	•	•	•	•	•	•
8.5' x 28'		•	•	•	•	•	•	•	•
8.5' x 30'				•	•	•	•	•	•
8.5' x 32'						•	•	•	•
8.5' x 34'							•	•	•
8.5' x 36'							•	•	•
STEEL FRAME, FIFTH WHEEL OR GOOSENECK									
Axle ->	TA2	TA3	TA4	TA5	TA6	TR52	TR60	TR70	TR80
8.5' x 22'		•	•	•	•				
8.5' x 24'		•	•	•	•				
8.5' x 26'		•	•	•	•				
8.5' x 28'		•	•	•	•	•	•	•	•
8.5' x 30'		•	•	•	•	•	•	•	•
8.5' x 32'		•	•	•	•	•	•	•	•
8.5' x 34'			•	•	•	•	•	•	•
8.5' x 36'			•	•	•	•	•	•	•
8.5' x 38'			•	•	•	•	•	•	•
8.5' x 40'						•	•	•	•
8.5' x 42'						•	•	•	•
8.5' x 44'						•	•	•	•
8.5' x 46'						•	•	•	•
8.5' x 48'						•	•	•	•
8.5' x 50'								•	•
8.5' x 52'								•	•
8.5' x 53'								•	•
ALUMINUM FRAME, BUMPER PULL									
Axle ->	TA2	TA3	TA4	TA5	TA6	TR52	TR60	TR70	TR80
8.5' x 12'		•	•						
8.5' x 14'		•	•						
8.5' x 16'		•	•						
8.5' x 18'		•	•			•			
8.5' x 20'		•	•			•			
8.5' x 22'		•	•			•			
8.5' x 24'		•	•			•			
8.5' x 26'			•			•			
8.5' x 28'			•			•			
8.5' x 30'			•			•			
8.5' x 32'			•			•			
8.5' x 34'			•			•			
Axle Information									
Call Out	Axle Description					GVWR			
TA2	Tandem 3,500 lb.					7,000 lb.			
TA3	Tandem 5,200 lb.					9,900 lb.			
TA4	Tandem 6,000 lb.					12,000 lb.			
TA5	Tandem 7,000 lb.					14,000 lb.			
TA6	Tandem 8,000 lb.					16,000 lb.			
TR52	Triple 5,200 lb.					15,600 lb.			
TR60	Triple 6,000 lb.					18,000 lb.			
TR70	Triple 7,000 lb.					21,000 lb.			
TR80	Triple 8,000 lb.					24,000 lb.			

MTB SERIES SPECIFICATIONS			STEEL FRAME		ALUMINUM FRAME
			TAG	FW/GN	TAG
HITCH					
2-5/16" Coupler with Safety Chains			•		•
3rd Member Tongue on TA3 Axles and Greater			•		•
2,000 lb. Top Wind Jack w/Sand Pad			•		•
Fifth Wheel - Adjustable Fifth Wheel Pin Box				•	
Gooseneck - 2-5/16" Adjustable Gooseneck Coupler				•	
Gooseneck - Short Bed Truck Requires 2" Kingpin Sleeve				•	
AXLE					
3,500 lb. Torsion Brake Axles on TA2 Models			•	n/a	•
5,200 lb. Torsion Brake Axles on TA3 Models			•	•	•
TIRES AND RIMS					
ST205/75R15C Radial Tires on TA2 Axles			•	n/a	•
ST225/75R15D Radial Tires on TA3 Axles			•	•	•
White Wheels			•	•	•
FRAME					
TA2 Models - Floor and Roof Frame Spacing			24"	n/a	16"
TA2 Models - Wall Frame Spacing			16"	n/a	16"
TA3 Models & up - Floor, Wall & Roof Frame Spacing			16"	16"	16"
3rd Member Tongue on TA3 or Greater Axles			•	n/a	•
Undercoated Frame			•	•	n/a
DOORS					
Double Rear Doors			•	•	•
For Trailers Less Than 18' Long (24' on FW/GN models)					
32" Camlock Door (with Step) on the Curb Side			•		•
For Trailers 18' Long or Longer (26' on FW/GN models)					
48" Camlock Door (with Step) on the Curb Side			•		•
INTERIOR					
3/4" Engineered Wood Flooring			•	•	•
3/8" Plywood Walls Trimmed with Lauan			•	•	•
EXTERIOR					
MTB Models Have a Flat Front and Roof with No Cap			•	•	•
.030 Exterior Metal			•	•	•
Aluminum Treadplate Stoneguard			•	•	•
Bright Front Aluminum Corners			•	•	•
One Piece Aluminum Roof			•	•	•
1-1/2" Lower Trim			•	•	3"
3" Lower Trim Standard on TA3 Axles and Up			•	•	•
ELECTRICAL					
7-Way Plug			•		•
Breakaway Box, Battery, & Switch			•		•
(2) 12-Volt Dome Lights With Switch			•		•
LED Strip Tail Light/Brake Lights, Surface Mounted			•		•
LED 2" Round, Recessed, Clearance Lights			•		•
Approximate* Dimensions (8.5' Wide)	Steel TA2	Steel TA3	Aluminum TA2	Aluminum TA3	
Side Door	32" x 72"	32" x 72"	32" x 72"	32" x 72"	
Hitch Height	18"	19"	17"	18"	
Interior Height	78"	78"	78"	78"	
Interior Width	96"	96"	96"	96"	
Exterior Height	100"	101"	100"	101"	
Rear Door Opening Height	72"	72"	72"	72"	
Rear Door Opening Width	91"	91"	91"	91"	
*Rounded to the nearest inch					

Your Professional Middlebury Trailers Dealer is:

