

RACE TRAILERS



Built For Action

You're the Boss - Designing a complex race trailer is a big job. There are potentially hundreds of choices to make, and they all need to be perfect. Our Sales Staff and Engineering Team have decades of experience building hundreds of race trailers. This allows us to help answer your questions so **you** can make the best decisions for your race trailer.

Size it Right - Whether buying a pair of shoes or a race trailer, the right size is important. The Xcelerator race trailer is available with either a steel or aluminum frame while the stacker models are available in steel frames only. Bumper Pull models range from 12' to 36' in length, while the fifth wheel/gooseneck models go from 22' to 53'. If it won't fit in one trailer, you can buy two!

Optimize Options - After picking the appropriate size, your Dealer can help you choose from hundreds of options such as: Cabinets, Tool Boxes, Lift Gates, Car Lift Systems, Observation Decks, Generators, Living Quarters, Bathrooms, Air Conditioning and more! Careful decisions here can guarantee you'll have a trailer that is a joy to work with. Feel free to ask questions so there are no surprises for you.

Refine the Design - Once the options have been chosen, our Engineering staff goes to work and creates the layout drawings. We then take the drawings to work with you and your dealer to review, refine and work out the details. It's not unusual to have a problem or two pop up, but that's where our experienced staff comes into play providing you with experienced based solutions and choices.



Four Models To Choose From!

MRT and MRTFW/GN

Race Trailer
Steel Frame



Options Shown

- Two-Tone Metal
- Front Mounted Ladder
- Aluminum Mod Wheels
- Pull Out Step
- ATP Hitch Cover

MRT 8.5x28 TA4

Options Shown

- ATP on Ramp & Flap
- ATP Covered Wheel Boxes
- (2) Swing Out Quartz Lights
- Wall Mounted Tire Rack
- Front Cabinets
- ATP on Floor



MXS and MXSFW/GN

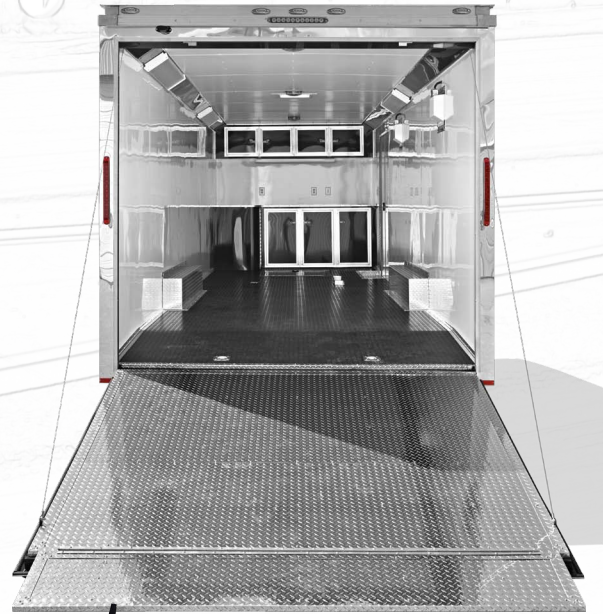
Deluxe Race Trailer
Steel Frame



Options Shown

- (2) Exterior Quartz Lights
- Extended Tongue
- Series 14 Rims

MXS 8.5x28 TA3



Options Shown

- Cove Mounted Fluorescent Lights
- ATP on Ramp Door and Flap
- Black Rubber Coin Floor
- ATP Wheel Well Covering
- Cabinets
- Roof Vent

Toll Free: (866) 314-2465

51790 County Road 39 • Middlebury, IN 46540

www.MiddleburyTrailers.com

Note: Specifications and pricing subject to change without notice. Please verify current specifications and pricing with your dealer. Thank you!

MXS-SKR and MXSFW/GN-SKR

Deluxe Stacker Race Trailer
Steel Frame

Some of the Options Shown are:

- Lift Gate
- ATP on Ramp & Flap
- ATP Covered Wheel Boxes
- Swing Out Quartz Light
- Wall Mounted Ladder to Roof
- Front Cabinets
- ATP on Floor
- E-Track on Wall
- E-Track on Floor
- Exterior Mounted Quartz Lights
- Cove Mounted Fluorescent Lights
- Speakers
- Craftsman Tool Cabinet
- Tongue Mounted Generator and Air Compressor
- And much, much more!



Lift Gate Opening

MXS 8.5x32 TR80 - SKR

AMXS and AMXSFW/GN

Deluxe Race Trailer
Aluminum Frame



Options Shown

- Fluted Metal along sides
- Aluminum Slide Out Step
- Brite Aluminum Band
- Tapered Nose
- Mod Wheels
- Extra Height
- ATP on Nose
- Spread Axles
- Kick Downs
- King Pin

Options Shown

- 36" Aluminum Flap on Ramp Door
- Spare Tire Mount w/Tire
- LED Lights in Raceway
- ATP Steps to Bunk
- Stereo and Speakers
- 2 Roof Vents
- ATP Floor
- Cabinets
- E-Track

AMXS 8.5x36 TA5

Toll Free: (866) 314-2465

51790 County Road 39 • Middlebury, IN 46540

www.MiddleburyTrailers.com

Note: Specifications and pricing subject to change without notice. Please verify current specifications and pricing with your dealer. Thank you!

STANDARDS AND SPECIFICATIONS

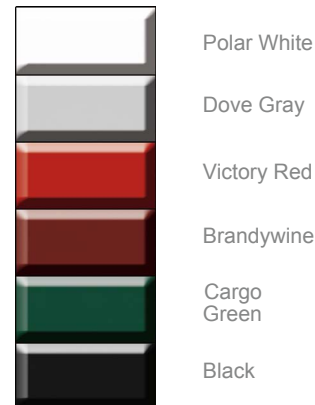
RACE TRAILERS

MRT	XCELERATOR SERIES							
	STEEL FRAME				ALUMINUM FRAME			
	TAG		FW/GN		TAG		FW/GN	

HITCH									
2-5/16" Coupler with Safety Chains	•	•	•	•	•	•	•	•	•
3rd Member Tongue on TA3 Axles and Greater	•	•	•	•	•	•	•	•	•
2,000 lb. Top Wind Jack w/Sand Pad	•	•	•	•	•	•	•	•	•
Fifth Wheel - Adjustable Fifth Wheel Pin Box	•	•	•	•	•	•	•	•	•
Gooseneck - 2-5/16" Adjustable Gooseneck Coupler	•	•	•	•	•	•	•	•	•
Hydraulic Sgl. Leg Tongue Jack w/12-Volt Battery & Box	•	•	•	•	•	•	•	•	•
AXLE									
Torsion Axles	•	•	•	•	•	•	•	•	•
TIRES AND RIMS									
ST205/75R15C Radial Tires on TA2 Axles	•	•	•	•	•	•	•	•	•
ST225/75R15D Radial Tires on TA3 Axles	•	•	•	•	•	•	•	•	•
White Wheels	•	•	•	•	•	•	•	•	•
TR70 Axle: ST235/80/R16E Radial Tires w/White Wheels	•	•	•	•	•	•	•	•	•
TR80 Axle: ST235/75/R17.5H Radial Tires w/Black Wheels	•	•	•	•	•	•	•	•	•
FRAME									
16" on Center Floor, Walls and Roof	•	•	•	•	•	•	•	•	•
2" x 5" Tube Mains	•	•	•	•	•	•	•	•	•
Undercoated Frame	•	•	•	•	•	•	•	•	•
H-Beam Main Rails	•	•	•	•	•	•	•	•	•
NASCAR Hat Posts	•	•	•	•	•	•	•	•	•
Rear Bogey Wheels	•	•	•	•	•	•	•	•	•
2" x 3" Rear Corner Posts w/Taillights in Door	•	•	•	•	•	•	•	•	•
Minimum Length for Standard 4' Beavertail	18'	26'	18'	26'	18'	26'	18'	26'	•
ELECTRICAL									
7-Way Plug	•	•	•	•	•	•	•	•	•
Breakaway Box, Battery, & Switch	•	•	•	•	•	•	•	•	•
(3) Dome Lights with Switch	•	•	Deluxe	Deluxe	Deluxe	Deluxe	Deluxe	Deluxe	•
LED Clearance Lights, Surface Mounted, M5	•	•	•	•	•	•	•	•	•
LED Clearance Lights, Surface Mounted	•	•	•	•	•	•	•	•	•
LED Strip Tail/Brake Lights	•	•	•	•	•	•	•	•	•
Oval LED Tail Lights Recessed in Door	•	•	•	•	•	•	•	•	•
INTERIOR									
3/4" Engineered Wood Flooring	•	•	•	•	•	•	•	•	•
3/8" Plywood Walls	•	•	•	•	•	•	•	•	•
Optional No Charge 5.2mm Whiteboard Walls* (Up to 18" of extra height only)	•	•	•	•	•	•	•	•	•
Screwless White Aluminum Over 3/8" Plywood	•	•	•	•	•	•	•	•	•
White Vinyl Insulated Ceiling	•	•	•	•	•	•	•	•	•
(4) D-Rings	•	•	•	•	•	•	•	•	•
78" Interior Height	•	•	•	•	•	•	•	•	•
54" Extra Height for 11' Interior Height	•	•	•	•	•	•	•	•	•
EXTERIOR									
.030 Exterior Metal	.030	.030	.030	.030	.040	.040	.030	.030	•
ATP Stoneguard	•	•	•	•	•	•	•	•	•
Bull Nose Fiberglass Cap	•	•	•	•	•	•	•	•	•
Cast Aluminum Front Corner Caps	•	•	•	•	•	•	•	•	•
Polished Aluminum Front Corner Caps	•	•	•	•	•	•	•	•	•
Brite Wrap Between Front Corners	•	•	•	•	•	•	•	•	•
Brite Wrap Front Corners	•	•	•	•	•	•	•	•	•
Cast Rear Corners	•	•	•	•	•	•	•	•	•
Brite Rear Hoop	•	•	•	•	•	•	•	•	•
One Piece Aluminum Roof	•	•	•	•	•	•	•	•	•
Extruded Exterior Top Trim	3"	3'	6"	6"	6"	6"	6"	6"	•
3" Lower Exterior Trim	•	•	•	•	•	•	•	•	•
(1) Non-Powered Roof Vent	•	•	•	•	N/A	N/A	•	•	•
Screwless Exterior w/Drive Rivets on Seams	•	•	•	•	•	•	•	•	•
Walk on Roof (No Ladder) (No Roof Vent!)	•	•	•	•	•	•	•	•	•
DOORS									
48" Barlock Door (with Step) Curb Side	•	•	•	•	•	•	•	•	•
48" Double RV Door - Curbside	•	•	•	•	•	•	•	•	•
Beavertail Ramp Door	•	•	•	•	•	•	•	•	•
75" Tall Ramp Door With Spring Assist	•	•	•	•	•	•	•	•	•
Recessed Camlocks in Ramp Door	•	•	•	•	•	•	•	•	•



Standard Colors



Metallic Colors



Extra Cost Colors



Middlebury Trailers is a Proud Member of the National Association of Trailer Manufacturers



Please See Your Dealer For Details!

STANDARD SIZES AND AXLE COMBINATIONS

RACE TRAILERS	MRT		XCELERATOR SERIES						
	STEEL FRAME		STEEL FRAME				ALUMINUM FRAME		
	TAG	FW/GN	TAG	FW/GN	STACKER		TAG	FW/GN	
					TAG	FW/GN			
8.5' Wide TA2 -- Tandem 3,500 lb. axles	12'-24'		12'-24'					18'-24'	
8.5' Wide TA3 -- Tandem 5,200 lb. axles	12'-28'	22'-32'	12'-28'	22'-32'				18'-34'	24'-36'
8.5' Wide TA4 -- Tandem 6,000 lb. axles	12'-28'	22'-38'	12'-28'	22'-38'				18'-34'	24'-36'
8.5' Wide TA5 -- Tandem 7,000 lb. axles	12'-30'	22'-38'	18'-30'	22'-38'				18'-34'	24'-36'
8.5' Wide TA6 -- Tandem 8,000 lb. axles	12'-30'	22'-38'	18'-30'	22'-38'				18'-34'	24'-36'
8.5' Wide TR52 -- Triple 5,200 lb. axles	18'-32'	28'-48'	18'-32'	28'-48'					36'-53'
8.5' Wide TR60 -- Triple 6,000 lb. axles	18'-36'	28'-48'	18'-36'	28'-48'					36'-53'
8.5' Wide TR70 -- Triple 7,000 lb. axles	18'-36'	28'-53'	18'-36'	28'-53'	30'-36'	40'-48'			36'-53'
8.5' Wide TR80 -- Triple 8,000 lb. axles	18'-36'	28'-53'	18'-36'	28'-53'	30'-36'	40'-53'			36'-53'

Dimensions*

RACE TRAILERS	MRT		XCELERATOR SERIES					
	STEEL FRAME 8.5' WIDE		STEEL FRAME 8.5' WIDE				ALUMINUM FRAME 8.5' WIDE	
	TAG	FW/GN	TAG	FW/GN	STACKER 8.5' WIDE		TAG	FW/GN
					TAG	FW/GN		
Side Door	48"	48"	48"	48"	48"	48"	48"	48"
Hitch Height	18"-20" **	TBD ***	18"-20" **	TBD ***	18"-20" **	TBD ***	18"-20" **	TBD ***
Interior Height	78"	78"	78"	78"	78"	78"	78"	78"
Interior Width	97"	97"	97"	97"	97"	97"	97"	97"
Exterior Height	101"	101"	104"	104"	104"	104"	104"	104"
Rear Door Opening Height	75"	75"	75"	75"	75"	75"	75"	75"
Rear Door Opening Width	91"	91"	91"	91"	91"	91"	91"	91"

* All dimensions are approximate.

** Depends on the size of the frame which is based on trailer length and axle selection

*** TBD = "To be determined" -- This is custom configured based on a truck information sheet supplied by the customer.

BIG TRAILERS FOR BIG JOBS



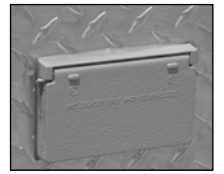
MXS - 8.5 x 34 - TR70 SKR



MTI Is THE KING OF CUSTOMIZATION!



Interior and Exterior GFI Outlets



Bathroom



Observation Deck



Hydraulic Leveling System



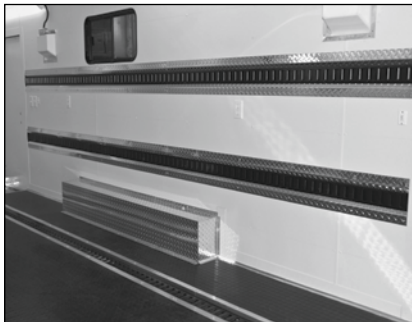
Custom Cabinets



Gemini Lift System



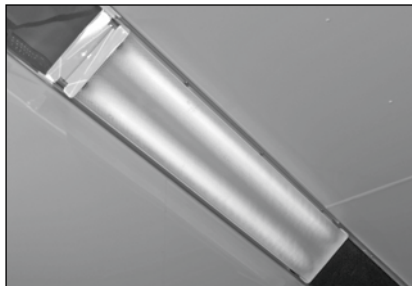
Interior Ladder



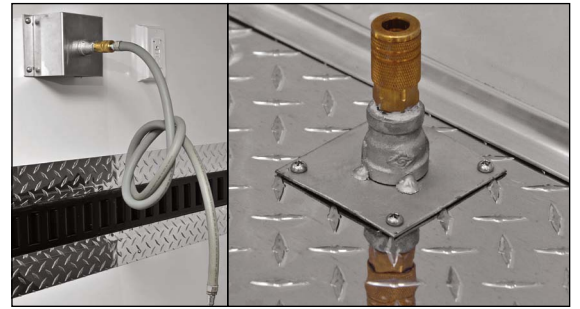
E-Track Mounted in Floor and Walls



Swing Out Interior Quartz Light



Raceway Mounted 4' Fluorescent Light w/Diffusers



Quick Connect Air Line Fittings



Exterior Quartz Light



Porch Light

Your Professional Middlebury Trailers Dealer

